



Battersea Reach | Juniper Drive | London | SW18 1TZ

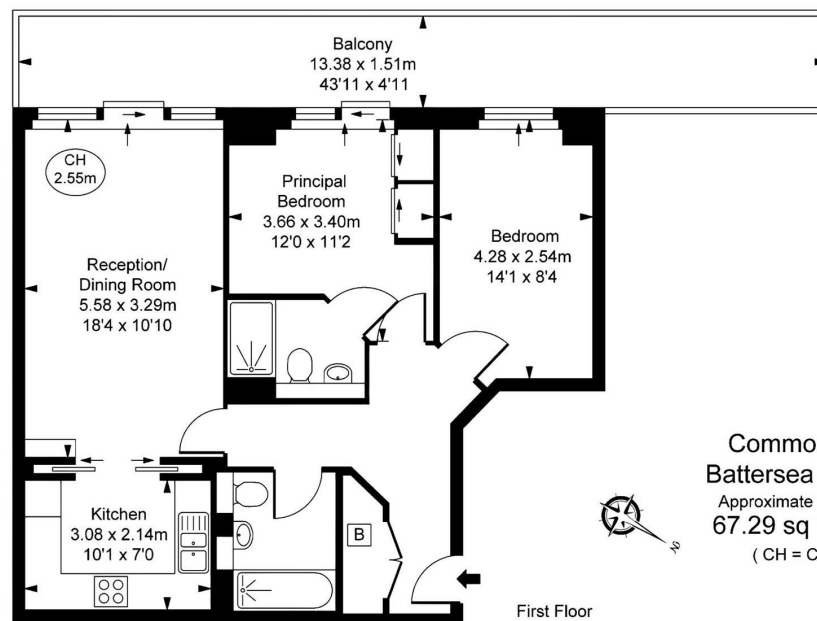
£2,700 Per month

**MASON
& VALE**
PROPERTY

Battersea Reach, Juniper Drive
 London | SW18 ITZ
 £2,700 Per month



- 24 Hour Concierge
- Onsite Residents Gym
- Secure Underground Parking
- Westerly facing
- Terrace
- Managed by Mason & Vale



Commodore House,
 Battersea Reach, SW18
 Approximate Gross Internal Area
 67.29 sq m / 724 sq ft
 (CH = Ceiling Heights)

Council Tax Band F
 EPC Rating D

Energy Efficiency Rating		Current	Potential
Very energy efficient - lower running costs			
(92 plus) A			
(81-91) B			
(69-80) C			
(55-68) D		56	57
(39-54) E			
(21-38) F			
(1-20) G			
Not energy efficient - higher running costs			
England & Wales	EU Directive 2002/91/EC		

This plan is not to scale. It is for guidance and not for valuation purposes.
 All measurements and areas are approximate only, and have been prepared in accordance with the current edition of the RICS Code of Measuring Practice.

02078560313
 hello@masonandvale.co.uk
 masonandvale.co.uk